



## Goldthorpe, Camden Street

£359,000 Tenure t.b.a

Shogun Realty are pleased to offer this delightful 3 bed maisonette situated on the ground and first floor of this popular local authority block. This property is centrally located, and its a pproximately 5 minutes walk to Camden town tube station, and easy access main tuibe lines.

- • 3 BEDROOMS
- • KITCHEN/DINER
- • REAR PATIO
- • SEPARATE WC
- • LIVING ROOM

# Goldthorpe, Camden Street

£359,000 Tenure t.b.a

---

## GROUND FLOOR

### ENTRANCE HALL

4.49m (14'9") max x 1.72m (5'8")

Stairs, door to:

### SEPARATE WC 1.79m x 0.74m

Frosted double glazed window to front.

### KITCHEN/DINER 4.27m x 2.87m

Washing machine, window to front, Storage cupboard, door to:

### LIVING ROOM 4.78m x 4.11m

Two full height double glazed windows to rear, patio door to:

### REAR PATIO 4.69m x 2.72m

## FIRST FLOOR

### LANDING 3.29m x 2.17m

Airing cupboard.

### MASTER BEDROOM 4.46m x 3.03m

Double glazed window to front.

### BEDROOM 2 4.13m x 3.06m

Double glazed window to rear, door to:

### BEDROOM3 3.3m x 2.04m

Single bed room with enough space to fit double bed

### FAMILY BATHROOM 2.7m x 1.7m

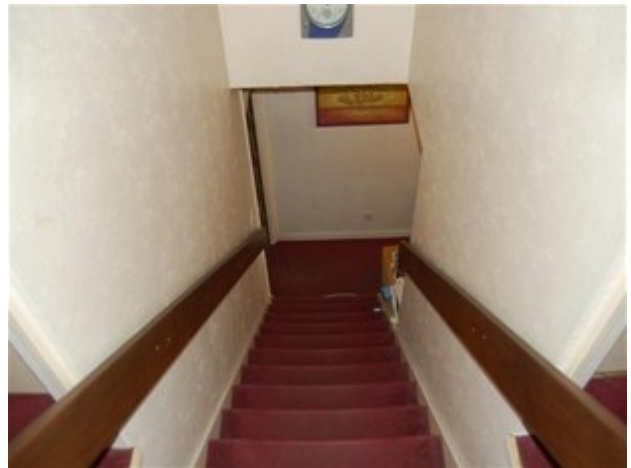
equiped with shower point

.  
Small frosted double glazed window to front.

# Goldthorpe, Camden Street

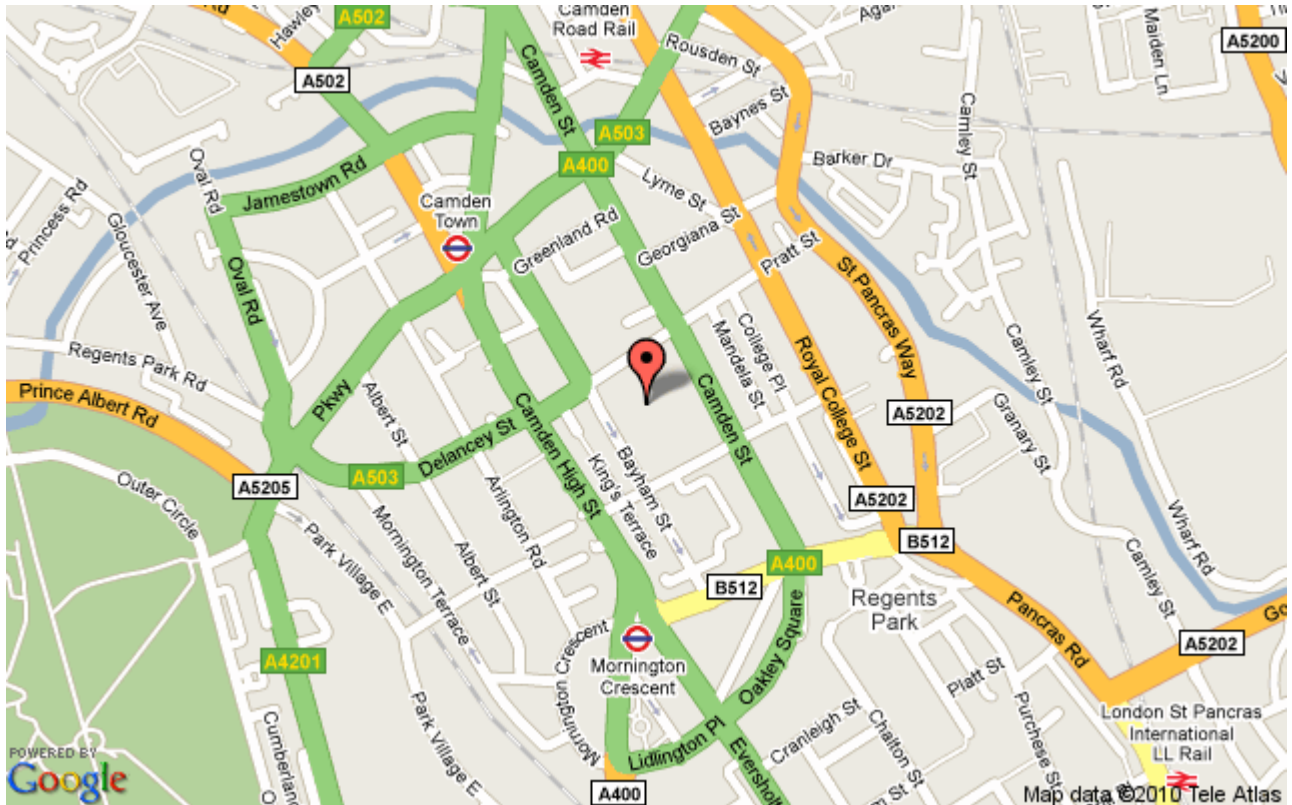
£359,000 Tenure t.b.a

---



# Goldthorpe, Camden Street

£359,000 Tenure t.b.a



Viewings via: Shogun Realty, 21 Pratt Street, Camden Town, London, NW1 0BG

# Goldthorpe, Camden Street

£359,000 Tenure t.b.a

---



Total area approx: 95.9 sq metres (1032.7 sq feet)